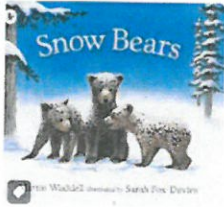


This week in Maple

We are here to help. If you have any questions or concerns, please talk to your child's keyworker or any of the staff.

Books of the week:

Snow Bears &
The Polar Bear and the Snow Cloud



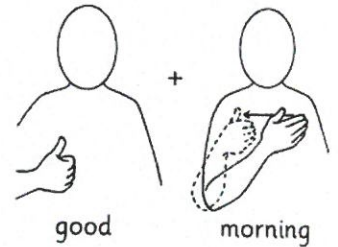
Rhyme(s) of the week:

The bear went over the mountain



Sign of the week:

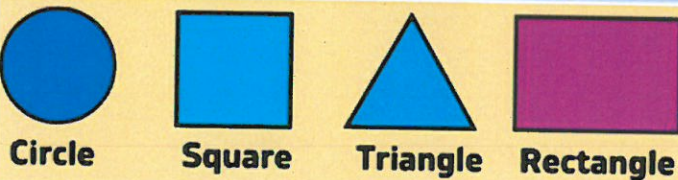
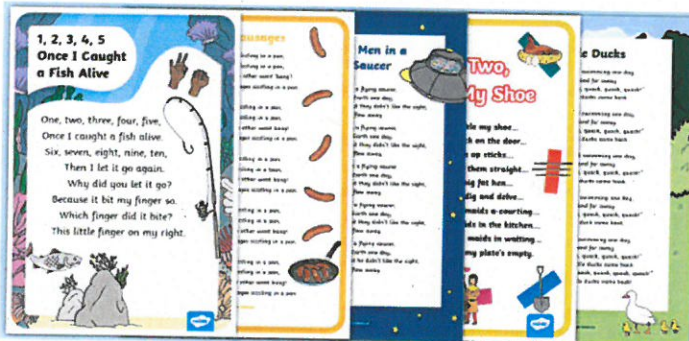
Good/ Good Morning



Maths

We will be:

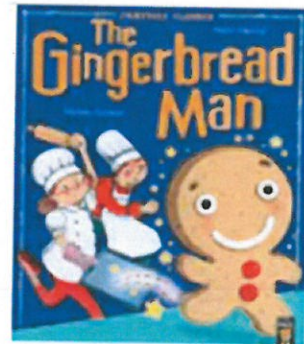
- Singing our favourite counting rhymes.
- Consolidating our knowledge of shape names and properties.



Phonics Phase 1 Aspect 4 – Rhythm and Rhyme

We will be:

- Listening to the familiar story, "The Gingerbread Man" and joining in with the repeating refrain, "Run, run as fast as you can, you can't catch me I'm the Gingerbread Man!"
- Some of us will be identifying the rhyming words in the refrain and talking about how we know when words rhyme.



Learning opportunities:

- We will be talking to all the children to find out what they did over the Christmas holidays. **Please send photos on EYLog so that we can talk to the children about the memories that they have made.**
- We will be reminding continuing children of our nursery routines (e.g. snack) as well as welcoming our new starters and modelling our expectations and routines for them.
- We will be reminding continuing children how to access, use and tidy up continuous provision and modelling this for our new starters.

Help at home:

Talk about the weather with your children. Observing the many changes in the world around them is the best way to teach your child about the changing seasons. Point out the difference in heavy dark clouds and explain why they look that way. Pose 'I wonder' questions such as "**I wonder where the sun is when it is raining?**" Ask them what they think of the frost on the car in the morning and how do they think it got there. Some of our key questions for this half term are weather questions which you could ask your children:

Is the weather the same every day?
What do I need to wear in cold weather?

Dates for your diary:

Tuesday 7th January – Nursery re-opens to continuing children.

Wednesday 22nd January – Grandparents stay and play.

Week commencing 27th January – We are artists week. Salt Pots will be doing clay tile workshop with the children on Wednesday.

Wednesday 29th January – Chinese New Year, year of the snake. On Tuesday & Thursday of wc 27th of January the children will have a special Chinese New Year themed lunch.